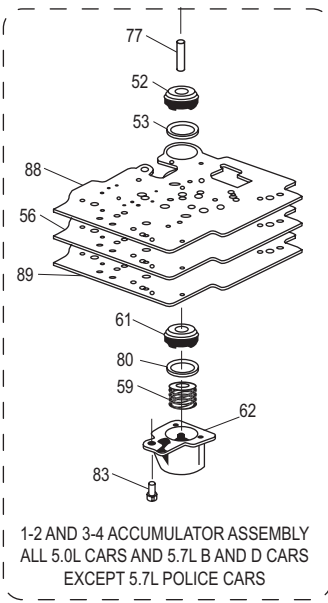
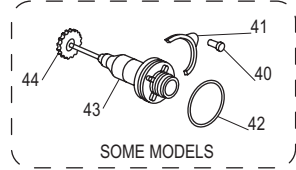
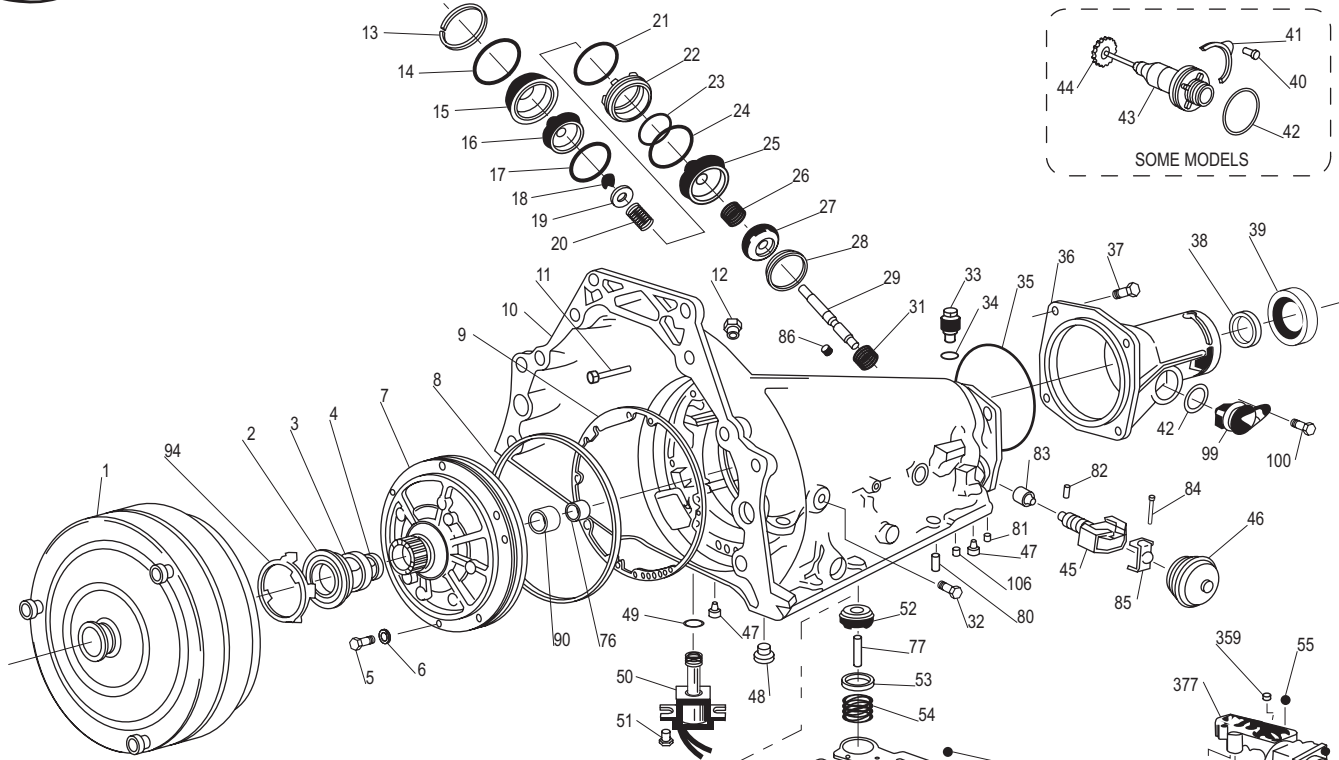


- 1- THRUST WASHER, PUMP TO DRUM
- 2- BAND ASSEMBLY
- 3- FRONT- BUSHING, REVERSE INPUT CLUTCH
- 4- RETAINER & BALL ASS'Y., CHECK VALVE
- 5- REVERSE INPUT CLUTCH, HOUSING & DRUM ASS'Y.
- 6- BUSHING, REVERSE INPUT CLUTCH - REAR
- 7- REVERSE INPUT CLUTCH, PISTON ASS'Y.
- 8- SEALS, REVERSE INPUT CLUTCH- INNER & OUTER
- 9- SPRING ASS'Y., REVERSE INPUT CLUTCH
- 10- RING, REVERSE INPUT CLUTCH SPRING RETAINER
- 11- WAVED PLATE- REVERSE INPUT CLUTCH
- 12- PLATE, ASS'Y, REVERSE INPUT CLUTCH
- 13- PLATE, REVERSE INPUT CLUTCH BACKING
- 14- RING, REVERSE INPUT CLUTCH RETAINING
- 15- BEARING ASS'Y, STATOR SHAFT/SELECTIVE WASHER
- 16- WASHER, THRUST/SELECTIVE
- 17- RETAINER & BALL ASS'Y., CHECK VALVE
- 18- SEAL, O-RING, TURBINE SHAFT/SELECTIVE WASHER
- 19- RING, OIL SEAL, TURBINE SHAFT
- 20- RETAINER & CHECK BALL ASS'Y.
- 21- PLUG, ORIFICED CUP
- 22- INPUT, HOUSING & SHAFT ASS'Y.
- 23- SEAL, O-RING INPUT TO FORWARD HOUSING
- 24- SEAL, 3RD & 4TH CLUTCH, INNER & OUTER
- 25- PISTON, 3RD & 4TH CLUTCH

- 26- RING, 3RD & 4TH CLUTCH APPLY
- 27- 3RD & 4TH CLUTCH, SPRING ASS'Y.
- 28- RETAINER & BALL ASS'Y., FORWARD CLUTCH HSG.,
- 29- HOUSING, FORWARD CLUTCH
- 30- SEAL, FORWARD CLUTCH, INNER & OUTER
- 31- PISTON, FORWARD CLUTCH
- 32- SEAL, OVERRUN CLUTCH, INNER & OUTER
- 33- PISTON, OVERRUN CLUTCH
- 34- OVERRUN CLUTCH, BALL
- 35- OVERRUN CLUTCH, SPRING ASS'Y.
- 36- SNAP RING, OVERRUN CLUTCH SPRING RETAINER
- 37- SEAL, INPUT HOUSING TO OUTPUT SHAFT
- 38- OVERRUN CLUTCH, PLATE ASS'Y.
- 39- BEARING ASS'Y, INPUT SUN GEAR
- 40- SNAP RING, OVERRUN CLUTCH HUB RETAINING
- 41- OVERRUN CLUTCH, HUB
- 42- SPRAG ASS'Y, WEAR PLATE
- 43- SPRAG ASS'Y, RETAINER RINGS
- 44- FORWARD SPRAG ASS'Y.
- 45- SPRAG, RETAINER & RACE ASS'Y.
- 46- RACE, FORWARD CLUTCH- OUTER
- 47- PLATE, FORWARD CLUTCH APPLY - V8 MODELS USE THICK - L-4 & V-6 USE THIN
- 48- PLATE, FORWARD CLUTCH SPACER - 2.5L, L-4 & 2.8L V-6 ENGINES ONLY
- 49- WAVED PLATE, FORWARD CLUTCH
- 50- FORWARD CLUTCH, PLATE ASS'Y.
- 51- PLATE, FORWARD CLUTCH BACKING
- 52- RING, FORWARD CLUTCH BACKING PLATE RETAINER
- 53- PLATE, 3RD & 4TH CLUTCH RING RETAINER
- 54- PLATE, 3RD & 4TH CLUTCH APPLY

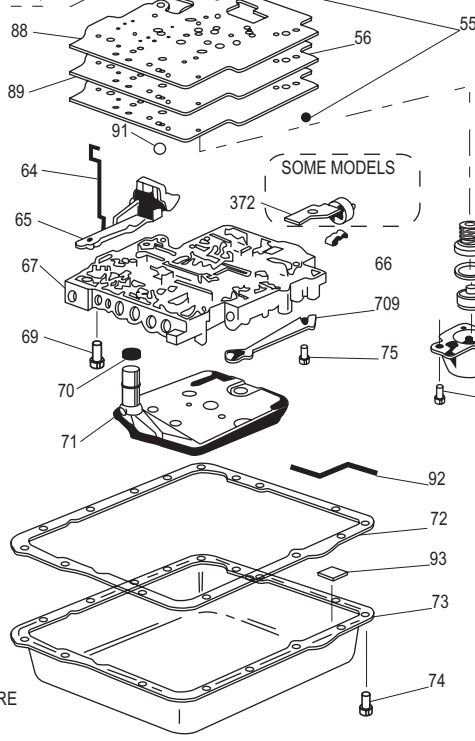
- 55- PLATE ASS'Y, 3RD & 4TH CLUTCH
- 56- PLATE, 3RD & 4TH CLUTCH BACKING
- 57- RING, 3RD & 4TH CLUTCH BACKING PLATE RETAINER
- 58- BUSHING, INPUT SUN GEAR- FRONT
- 59- GEAR, INPUT SUN
- 60- BUSHING, INPUT SUN GEAR- REAR
- 61- WASHER, THRUST- INPUT CARRIER/RACE
- 62- RET., OUTPUT SHAFT TO INPUT CARRIER
- 63- CARRIER ASS'Y., INPUT - COMPLETE
- 64- BEARING ASS'Y., THRUST - INPUT CARRIER TO REACTION SHAFT
- 65- GEAR, INPUT INTERNAL
- 66- BUSHING, REACTION CARRIER SHAFT, FRONT
- 67- SHAFT, REACTION CARRIER
- 68- BUSHING, REACTION CARRIER SHAFT, REAR
- 69- RING, REACTION SHAFT/INTERNAL GEAR RETAINER
- 70- WASHER, THRUST - REACTION SHAFT/SHELL
- 71- SHELL, REACTION SUN
- 72- RING, REACTION SUN GEAR RETAINER

- 73- BUSHING, REACTION SUN
- 74- GEAR, REACTION SUN
- 75- WASHER, THRUST - RACE/REACTION SHELL
- 76- RACE, LOW & REVERSE ROLLER CLUTCH
- 77- RING, LOW & REVERSE SUPPORT TO CASE RETAINER
- 78- RING, LOW & REVERSE RETAINER - ROLLER ASS'Y./CAM
- 79- CLUTCH ASS'Y., LOW & REVERSE ROLLER
- 80- SUPPORT ASS'Y., LOW & REVERSE CLUTCH
- 81- SPRING, TRANSMISSION LOW & REVERSE CLUTCH SUPPORT RETAINER
- 82- CARRIER ASS'Y., REACTION
- 83- DEFLECTOR, OIL - HIGH OUTPUT MODELS ONLY
- 84- PLATE ASS'Y., LOW & REVERSE CLUTCH
- 85- BEARING ASS'Y., THRUST - REACTION CARRIER/SUPPORT
- 86- GEAR, INTERNAL REACTION
- 87- SUPPORT, INTERNAL REACTION GEAR
- 88- RING, REACTION GEAR/SUPPORT RETAINER
- 89- SHAFT, OUTPUT
- 90- CLIP, SPEEDOMETER DRIVE GEAR
- 91- GEAR, SPEEDOMETER DRIVE
- 92- SLEEVE, OUTPUT SHAFT
- 93- SEAL, OUTPUT SHAFT
- 94- BEARING, REACTION GEAR SUPPORT TO CASE
- 95- RING, LOW & REVERSE CLUTCH RETAINER
- 96- SPRING ASS'Y., LOW & REVERSE CLUTCH
- 97- PISTON, LOW & REVERSE CLUTCH
- 98- SEAL, TRANSMISSION - LOW & REVERSE CLUTCH - OUTER, CENTRE - INNER



- 1- CONVERTER ASSEMBLY
- 2- SEAL ASSEMBLY, OIL
- 3- BUSHING, OIL PUMP BODY
- 4- BUSHING, STATOR SHAFT (FRONT)
- 5- BOLT, PUMP TO CASE
- 6- O-RING PUMP TO CASE BOLT
- 7- PUMP ASSEMBLY, OIL
- 8- SEAL, OIL (PUMP TO CASE)
- 9-GASKET, PUMP COVER TO CASE
- 10- CASE, TRANSMISSION
- 11- VENT ASSEMBLY, TRANSMISSION
- 12- CONNECTOR, OIL COOLER PIPE
- 13- RING, SERVO COVER RETAINING
- 14- SEAL, O-RING (2-4 SERVO COVER)
- 15- COVER, 2-4 SERVO
- 16- PISTON, 4TH APPLY
- 17- RING, OIL SEAL (4TH APPLY PISTON OUTER)
- 18- RING, RETAINER (APPLY PIN)
- 19- WASHER, SERVO APPLY PIN
- 20- SPRING, SERVO APPLY PIN
- 21- SEAL, O-RING
- 22- HOUSING, SERVO PISTON (INNER)
- 23- RING, OIL SEAL (2ND APPLY PISTON) (INNER)
- 24- RING, OIL SEAL (2ND APPLY PISTON) (OUTER)
- 25- PISTON, 2ND APPLY
- 26- SPRING, SERVO CUSHION
- 27- RETAINER, SERVO CUSHION SPRING
- 28- RING, RETAINER (2ND APPLY PISTON)
- 29- PIN, 2ND APPLY PISTON
- 31- SPRING, SERVO RETURN
- 32- PLUG, PRESSURE
- 33- CONNECTOR, ELECTRICAL
- 34- SEAL, O-RING (ELECTRICAL CONNECTION)
- 35- SEAL, CASE EXTENSION TO CASE
- 36- EXTENSION CASE
- 37- BOLT, CASE EXTENSION TO CASE
- 38- BUSHING, CASE EXTENSION
- 39- SEAL ASSEMBLY, CASE EXTENSION OIL
- 40- RETAINER, SPEEDO DRIVEN GEAR FITTING
- 41- BOLT & WASHER ASSEMBLY
- 42- SEAL, O-RING (SPEEDO FITTING TO CASE EXTENSION)
- 43- FITTING ASSEMBLY, SPEEDO DRIVEN GEAR
- 44- GEAR, SPEEDO DRIVEN
- 45- GOVERNOR ASSEMBLY

- 46- COVER, GOVERNOR
- 47- SCREEN, TRANSMISSION OIL PRESSURE (CONVERTER & GOVERNOR)
- 48- PIN, BAND ANCHOR
- 49- SEAL, O-RING (SOLENOID)
- 50- SOLENOID ASSEMBLY
- 51- BOLT, HEX. WASHER HEAD (SOLENOID)
- 52- PISTON, 3-4 ACCUMULATOR
- 53- RING, OIL SEAL (3-4 ACCUMULATOR PISTON)
- 54- SPRING, 3-4 ACCUMULATOR
- 55- BALL, .25 DIAMETER
- 56- PLATE, VALVE BODY SPACER
- 59- SPRING, 1-2 ACCUMULATOR
- 60- RING, OIL SEAL (1-2 ACCUMULATOR PISTON)
- 61- PISTON, 1-2 ACCUMULATOR
- 62- COVER & PISTON ASSEMBLY, 1-2 ACCUMULATOR
- 63- BOLT, ACCUMULATOR COVER



- 64- LINK, THROTTLE LEVER TO CABLE
- 65- LEVER & BRACKET ASSEMBLY, THROTTLE
- 66- CLIP, ELECTRICAL WIRE
- 67- VALVE ASSEMBLY, CONTROL BODY
- 69- BOLT, VALVE BODY
- 70- SEAL, FILTER
- 71- FILTER ASSEMBLY, TRANSMISSION OIL
- 72- GASKET, TRANSMISSION OIL PAN
- 73- PAN, TRANSMISSION OIL
- 74- SCREW, SPEC. HEX WASHER HEAD (PAN)
- 75- BOLT, MANUAL DETENT SPRING
- 76- BUSHING, CASE
- 77- PIN, ACCUMULATOR PISTON
- 80- RETAINER & BALL ASSEMBLY, 3RD ACCUMULATOR
- 81- PLUG, TRANSMISSION CASE (ACCUMULATOR BLEED)

- 82- PIN, GOVERNOR GEAR RETAINER
- 83- GEAR, GOVERNOR DRIVEN
- 84- PIN, GOVERNOR WEIGHT
- 85- CAP, GOVERNOR THRUST
- 86- PLUG, CASE SERVO
- 88- GASKET, SPACER PLATE TO CASE
- 89- GASKET, SPACER PLATE TO VALVE BODY
- 90- BUSHING, STATOR SHAFT (REAR)
- 91- BALL, CARBON STEEL (T.V. EXHAUST)
- 92- CONDUIT, SOLENOID WIRE
- 93- MAGNET, CLIP CONNECTOR
- 94- RETAINER, FRONT HELIX SEAL
- 96- TUBE, AUXILIARY ACCUMULATOR VALVE
- 97- CLAMP, TUBE
- 99- SPEED SENSOR, INTERNAL TRANSMISSION
- 100- BOLT, SPEEDO SENSOR RETAINING
- 106- RETAINING & BALL ASM. (DOUBLE ORIFICE)
- 359- PLUG, CLIP (ORIFICE)
- 372- SWITCH, TEMPERATURE (SOME MODELS)
- 374- BOLT, SPECIAL HEX HEAD (M6 X 1 X 16)
- 375- BOLT, HEX HEAD (M6 X 1 X 35)
- 376- BOLT, HEX HEAD (M6 X 1 X 45)
- 377- AUXILIARY ACCUMULATOR VALVE BODY ASSEMBLY
- 709 SPRING ASSEMBLY, MANUAL DETENT

HIGH PERFORMANCE PRODUCTS

TH700-R4 / TH200-4R, 4L60E 13 Vane Pump Rotor
Product #373405



10 Vane Pump Rotor



13 Vane Pump Rotor

TH700-R4 / TH200-4R, 4L60E 10 Vane Pump Rotor
Product #373404

- The Billet Steel 10 & 13 Vane Pump Rotors are manufactured from 4140 HTSR steel for high performance applications
- 100% Drop-in part

4L60E 4X4 Output Shaft
Product #378100

Must Have for Heavy Duty, High Horsepower Applications

- Made from 300M material
- Aerospace grade Heat treat
- Precision ground
- 100% drop-in assembly



TH700-R4 Hardened Sun Shell
Product #51810B

"THE BEAST" This sun shell is for all your domestic and performance needs.



TH700-R4 Low/Intermediate Boost Valve & Sleeve
Product #K020

- Replaces the smaller diameter & worn O.E.M. valve
- Helps keep the transmission in manual low to a higher M.P.H.
- Delivers more boost pressure in manual low & second gears
- Made of hardened steel to resist wear



TH700-R4 Super Servo
Product #K012

The Largest APPLY Surface available



TH700-R4 2-4 Corvette Servo Piston
Product #K51828C



TH700-R4 Non Lockup Conversion Valve
Product #7CCV



TH700-R4, 4L60 3-4 Upshift Sleeve
Product #51886



TH700-R4/4L60/4L60E Raybestos 3-4 Z-Pack
Product #K51353Z



TH700-R4 Alto 3-4 PowerPack
Product #K51353HD



TH700-R4 4th Gear Lockup Package
Product #K013

