



TOURNAMENT
OF
STATE CHAMPIONS
EST. 2005
CEREDO-KENOVA, WV

2013 Visitor's Guide

**9th Annual Little League Baseball 9-10 Year-Old
Tournament of State Champions**

**July 26 – 31, 2013
Legendary Mitch Stadium
Ceredo-Kenova, West Virginia**

Welcome to Ceredo-Kenova

Tournament Players, Coaches, Families, and Fans:

Welcome to Legendary Mitch Stadium and the 2013 Tournament of State Champions. On behalf of the 250 players and countless volunteers who comprise Ceredo-Kenova Little League, we are thrilled to have you visiting.

Players in this tournament are to be congratulated for reaching a high level of athletic achievement at an early age. We hope you will build on this success both athletically and personally, remembering the Little League motto of “character, courage and loyalty.” Set high goals in all your pursuits and let this experience be an example of what may be achieved through hard work and dedication.

To parents and fans, it is through your example that the participants in this tournament will someday carry the tradition of Little League Baseball to the next generation. Please support your team while keeping in mind that every person involved with Little League is a volunteer. You are urged to exhibit good sportsmanship while supporting your favorite team and asked to do your best to make this tournament a great experience for every player.

The towns of Ceredo and Kenova provide sterling examples of “Hometown America,” and the staff of Ceredo-Kenova Little League invites you to be part of our hometowns during your stay. Should we be able to assist you in any way, please ask. We are glad to have you as guests and trust that “The Mitch” will be a lifetime memory for every child.

Cordially,



Paul A. Billups
Tournament Director

Mitch Stadium

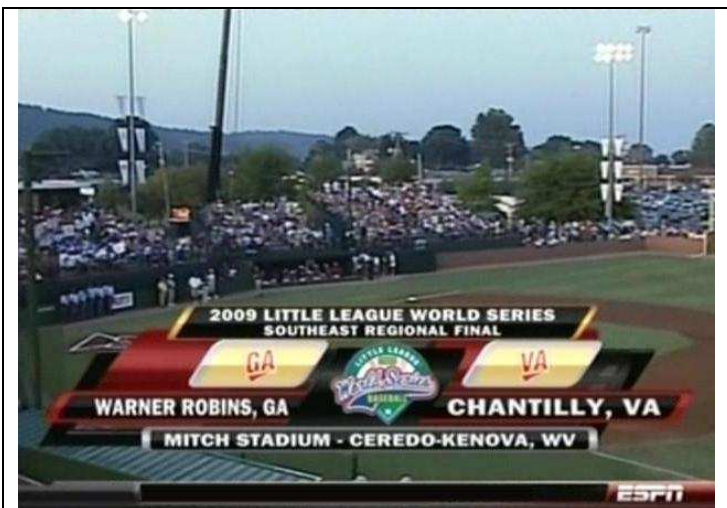


Long before Cleveland had “The Jake” or Arizona had “The Bob”, Ceredo-Kenova had “The Mitch”. Mitch Stadium stands proudly as a community landmark on the border between the sister cities of Ceredo and Kenova.

“Legendary” Mitch Stadium has played host to the 2009 Little League Southeast Regional Baseball and Softball Tournaments, the 1968 Divisional Tournament under Little League’s previous tournament format, eight West Virginia Little League State Tournaments, and the Little League 9-10 Year-Old Tournament of State Champions since its inception in 2005.

Literally located in both towns (the municipal boundary runs between home plate and the pitcher’s mound), Mitch Stadium opened in 1955 and is named in honor of Elmer Mitchell. "Big Mitch", a Kenova police officer, became the ambassador of Ceredo-Kenova Little League Baseball, serving as groundskeeper, concession stand operator, and general sage to all who would listen. In 1975, the C-K community honored Mitchell for his service, changing the facility's name to "Mitch Stadium". Big Mitch continued his commitment and dedication to the league until his death in 1981.

In recent years, new stadium lighting has been installed, new batting cages were constructed, brick walls were built along both foul lines, new dugouts were recessed to major league style, the entire infield was resurfaced, and stadium advertising was erected to add a nostalgic look. In 2005, a wooden outfield fence was installed to replicate the fence at Original Field in Williamsport, Pennsylvania – site of the first Little League game. Stadium groundskeepers are very adept at having patterns in the grass and giving each player who walks into Mitch Stadium the feeling of playing in a professional park.



ESPN’s broadcast of the 2009 Southeast Regional Final from Mitch Stadium had more than 1 million viewers.

Mitch Stadium is equipped with radio, video, and internet capabilities, a full infield rain tarp, and a dedicated volunteer staff that has been hosting baseball events for years. The entire Ceredo-Kenova community looks forward to welcoming the Southeastern Regional for a memorable summer while we showcase “Hometown Little League” and “Hometown America” at its best.

Directions

TOURNAMENT VENUE

All tournament games will be played at Mitch Stadium in Ceredo-Kenova, West Virginia. Ceredo and Kenova are the western-most cities in West Virginia, located approximately five miles west of Huntington and bordering Kentucky and Ohio. Mitch Stadium is located approximately 1 mile from Exit 1 of Interstate 64 in West Virginia.

DIRECTIONS

FROM I-64 WESTBOUND

Follow I-64 to Exit 1, “Ceredo-Kenova”;
Go right off the exit ramp and proceed to the 3rd traffic signal (at CVS Pharmacy);
Turn right onto U.S. Route 60;
Go to the 2nd traffic signal (just past McDonald’s) and turn right;
You will be looking at the stadium.

FROM I-64 EASTBOUND

Follow I-64 to Exit 1, “Ceredo-Kenova”;
Turn left off the exit ramp and proceed to the 4th traffic signal (at CVS Pharmacy);
Turn right onto U.S. Route 60;
Go to the 2nd traffic signal (just past McDonald’s) and turn right;
You will be looking at the stadium.

FROM HUNTINGTON MALL AREA HOTELS

Follow directions for I-64 Westbound. Approximate driving time 20 minutes to stadium.

FROM ASHLAND/CANNONSBURG AREA HOTELS

Follow directions for I-64 Eastbound. Approximate driving time 10 minutes to stadium.

FROM DOWNTOWN HUNTINGTON

Follow Route 60 (Fourth Avenue) West, approximately 5 miles;
Upon entering Ceredo, proceed to the 3rd traffic signal (beside Speedway), and turn left;
You will be looking at the stadium.

ADDRESS

For online mapping services and navigational devices, you can use the following address to get to Mitch Stadium.

**600 Poplar Street
Kenova, WV 25530**

Stadium Particulars

PLAYING SURFACE

The stadium infield skin surface is constructed of Beam Clay Premium Infield Mix over a sand and gravel drainage base. The top dressing is a mixture of Turface Pro League Red infield conditioner and Diamond Pro conditioner. The pitching mound and home plate areas are constructed Turface Professional Mound Clay.

The infield grass is a Bermuda grass, maintained at a height of 1 and ¼ inches. The outfield grass is tall lawn fescue, maintained at a height of 2 inches.

The area from foul line to the boundary fence (brick wall) is equidistant on both sides of the playing field at an average distance of 22 feet. The backstop is 20 feet behind home plate and extends vertically 20 feet. The entire field is surrounded by a 10 foot Safe-Track warning track.

OUTFIELD FENCE

The outfield fence is six feet high, constructed of wood and is a replica of the fence on the Original League field in Williamsport, PA.

BATTING CAGES

Two batting cages are located behind the stadium grandstand. The cages are astroturfed for foul weather use and will be available to tournament teams prior to each game.

PRACTICE FACILITIES

Warm-up space is provided on the Minor League field located beyond the right field fence. Batting cages are available prior to game time. Additional practice field times will be scheduled at the Manager's Meeting.

SEATING

Main stadium seating consists of bleacher seating located between home plate and each dugout, as well as down the left field line. Seating during the Tournament of State Champions will be available for approximately 500. Limited lawn chair seating is available on the "On Deck Pavilion" along the right field line. The On Deck Pavilion is reserved for lawn chairs only and features deck umbrellas for shade and is available on a first-come first-serve basis. Chairs and personal belongings must be removed from the deck each night.

STADIUM PARKING

All stadium parking is free and located directly behind the left field fence. The paved lot will accommodate approximately 500 cars and is adjacent to the Ceredo Plaza Shops. Signs will direct vehicles to the parking lot.

FIRST AID

The first aid station is located in the concourse area near the picnic shelter. Emergency medical personnel will be present during all games.

STADIUM CONCESSIONS

The main stadium concession stand is located behind home plate. The main stand features typical ball park fare, including hot dogs, pizza, popcorn, candy, soft drinks and water.

Junior's All-Star Grill is located in the left field pavilion area and features heavier fare such as hamburgers, mets and brats, along with soft drinks. Stadium vendors will pass through the stands offering soft drinks, water, and salted peanuts.

MEMORABILIA SALES

A souvenir stand is located near the left field picnic shelter, offering t-shirts, souvenir balls, trading pins, souvenir miniature bats and tournament programs.

PHOTOGRAPHY POLICY

Santilli Sports Photography (www.sspwv.com) is the official tournament photographer of Mitch Stadium. Action photographs will be offered for sale at the photographer's tent, located beside the batting cages. Fans are welcome to take pictures from the stands but may not enter the playing field. Flash photography is prohibited.

RADIO COVERAGE

Team representatives should contact their local radio stations to determine whether the local station desires to carry a live broadcast of your games. Mitch Stadium is equipped for radio broadcasts. Local station will have the option of sending an announcer or picking-up a local feed. Contact us at radio@mitchstadium.com for local radio arrangements.

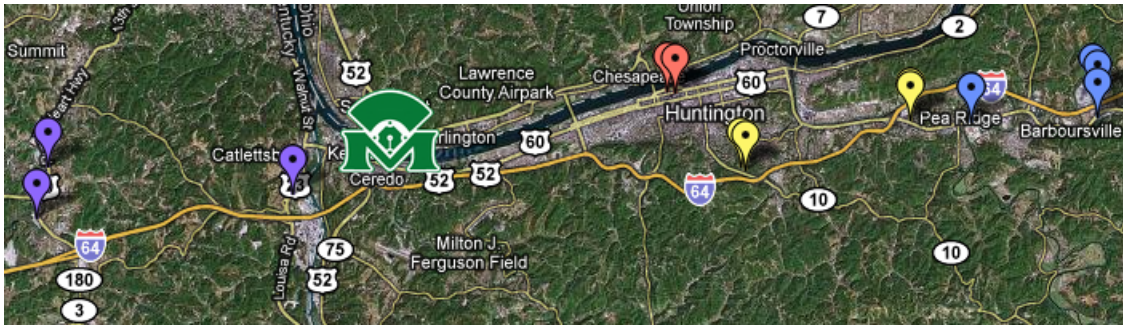
STATISTICS

Complete box score will be available for each Manager approximately five minutes following completion of each game.

NEWS COVERAGE

Team representatives are requested to provide the name, telephone number, and email address of your local newspaper. Scores and reports of each game will be electronically mailed or faxed to your local paper immediately following each game. Two daily newspapers from the Huntington area will cover each tournament game. Copies of The Herald-Dispatch and the Wayne County News will be available at the stadium.

Area Hotels



DOWNTOWN HUNTINGTON HOTELS (red placemarkers)

Holiday Inn Hotel & Suites

800 3rd Avenue
Huntington, WV
(304) 523-8880

2009 SE REGIONAL HOST HOTEL

Pullman Plaza Hotel

1001 3rd Avenue
Huntington, WV
(304) 525-1001

HUNTINGTON MALL AREA HOTELS (blue placemarkers)

Best Western Huntington Mall

3441 Rt. 60 East
Barboursville, WV 25504
(304) 736-9772

Holiday Inn Express

3551 Rt. 60 East
Barboursville, WV 25504
304-733-3338

Hampton Inn Barboursville

1 Cracker Barrel Drive
Barboursville, WV
(304) 733-5300

Comfort Inn Barboursville

249 Mall Road
Barboursville, WV
(304) 733-2122

INTERSTATE AREA HOTELS (yellow placemarkers)

Days Inn

5196 Rt. 60 E.
Huntington, WV
(29th St. Exit)
(304) 733-4477

Ramada Limited Huntington

3094 16th Street Road
Huntington, WV
(Hal Greer Blvd. Exit)
(304) 523-4242

Quality Inn

3325 US Route 60 East
Huntington, WV
304-525-7001

Red Roof Inn

5190 Rt. 60
Huntington, WV
(29th St. Exit)
(304) 733-3737

Super 8 Motel

3090 16th Street Road
Huntington, WV
(304) 525-1410

TownePlace Suites by Marriott

157 Kenitic Drive
Huntington, WV 25701
(304) 525-4877

KENTUCKY AREA HOTELS (purple placemarkers)

(Ashland, Cannonsburg, and Cattlesburg, Kentucky are adjacent to the city of Kenova.)

Ramada Limited Catlettsburg
6000 Crider Drive
Catlettsburg, KY
(606) 739-5700

Holiday Inn Express
13131 Slone Ct.
Ashland, Kentucky 41101
(606) 929-1720

Fairfield Inn Ashland
10945 Rt. 60
Ashland, KY
(606) 928-1222

Tournament Website

www.MitchStadium.com



Game Schedule

Friday, July 26

- 5:00 Opening Ceremonies
- 5:30 Tournament Clinic – Guest Speaker
- 6:00 Tournament Parade
- 6:30 Welcome Cook-out at Dreamland Pool
- 8:30 Managers and Coaches Meeting at Ceredo City Hall
- 9:30 Umpires Meeting

Saturday, July 27

- 11:00 Tournament Pool Play Game 1 – North Carolina vs. South Carolina
- 2:00 Tournament Pool Play Game 2 – Tennessee vs. West Virginia
- 5:00 Tournament Pool Play Game 3 – Alabama vs. Florida
- 8:00 Tournament Pool Play Game 4 – Georgia vs. Virginia

Sunday, July 28

- 11:00 Tournament Pool Play Game 5 – North Carolina vs. Tennessee
- 2:00 Tournament Pool Play Game 6 – Alabama vs. Georgia
- 5:00 Tournament Pool Play Game 7 – Florida vs. Virginia
- 8:00 Tournament Pool Play Game 8 – South Carolina vs. West Virginia

Monday, July 29

- 11:00 Tournament Pool Play Game 9 – Tennessee vs. Georgia
- 2:00 Tournament Pool Play Game 10 – South Carolina vs. Florida
- 5:00 Tournament Pool Play Game 11 – West Virginia vs. Virginia
- 8:00 Tournament Pool Play Game 12 – North Carolina vs. Alabama

Tuesday, July 30

- 1:00 Quarterfinal Game 1 - #3 vs. #6 (if necessary)
- 3:00 Quarterfinal Game 2 - #4 vs. #5 (if necessary)
- 5:30 Semifinal Game 1 - #2 vs. Winner Quarterfinal 1 (if necessary) or #3
- 8:00 Semifinal Game 2 - #1 vs. Winner Quarterfinal 2 (if necessary) or #4

Wednesday, July 31

- 7:05 Championship Game



Mitch Stadium Production Network

The Mitch Stadium Production Network (MSPN) began as a novelty, but has grown into a multimedia package that is able to bring all the exciting action from Mitch Stadium to a worldwide audience. In six years time, MSPN has evolved to include radio broadcasts, live internet broadcasts, replays of completed games on big screen televisions at Mitch Stadium, and a source of information for media and fans on the internet.

Featuring four camera angles and professional play-by-play and color commentators, MSPN broke new ground, adding a highly anticipated feature around the ballpark. All games will feature play-by-play and color commentary.

Since 2005, the live audio of tournament games at Mitch Stadium have been broadcast live on the internet, and thousands of connections have been made to listen during the tournaments. Calls from as far away as Italy and southeast Asia have been received at Mitch Stadium from friends and family listening online, huddled around the computers listening to games like fans used to listen around radios during the golden age of baseball. In 2008, MSPN included live streaming video on tournament games on the internet.

MSPN will return for all games in the 2013 Little Tournament of State Champions. The live video of broadcasted games will be made available online at www.MitchStadium.com via iHigh.com. Wherever you are in the world, log on to MitchStadium.com and follow your team and live.

Past Tournament Champions

PAST TOSC CHAMPIONS
2012 – North Springs Little League (FL)
2011 – Plant City Little League (FL)
2010 – Columbus American LL (GA)
2009 – Mobile Westside Little League (AL)
2008 - Columbus American LL (GA)
2007 – Warner Robins American LL (GA)
2006 – Citrus Park Little League (FL)
2005 - Dumfries-Triangle-Quantico LL (VA)



2012



2011



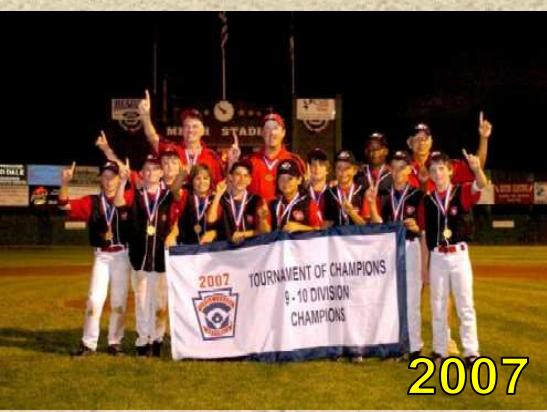
2010



2009



2008



2007



2006



2005

Past Tournament Participants

SOUTHEAST REGION (2013 TOSC PARTICIPANTS)

ALABAMA

2012 – Phenix City American Little League (Phenix City, AL)
 2011 – Huntsville American Little League (Huntsville, AL)
 2010 – Huntsville Eastern Little League (Huntsville, AL)
 2009 - Westside Little League (Mobile, AL)
 2008 – Huntsville Eastern Little League (Huntsville, AL)
 2007 - Westside Little League (Mobile, AL)
 2006 - Phenix City American Little League (Phenix City, AL)

FLORIDA

2012 – North Springs Little League (Coral Springs, FL)
 2011 – Plant City Little League (Plant City, FL)
 2010 – South Fort Myers Little League (Fort Myers, FL)
 2009 – South Fort Myers Little League (Fort Myers, FL)
 2008 – Greater Naples Little League (Naples, FL)
 2007 – Viera/Suntree Little League (Melbourne, FL)
 2006 - Citrus Park Little League (Tampa, FL)

GEORGIA

2012 – Columbus Northern Little League (Columbus, GA)
 2011 – Columbus American Little League (Columbus, GA)
 2010 - Columbus American Little League (Columbus, GA)
 2009 - Columbus American Little League (Columbus, GA)
 2008 - Columbus American Little League (Columbus, GA)
 2007 - Warner Robins American LL (Warner Robins, GA)
 2006 - Warner Robins American LL (Warner Robins, GA)
 2005 - Columbus American Little League (Columbus, GA)

NORTH CAROLINA

2012 – North State Little League (Greenville, NC)
 2011 – Bull City Little League (Durham, NC)
 2010 – Tar Heel Little League (Greenville, NC)
 2009 – Kernersville Little League (Kernersville, NC)
 2008 – Tar Heel Little League (Greenville, NC)
 2007 - Weddington Little League (Weddington, NC)
 2006 - Southwest Forsyth Little League (Clemmons, NC)
 2005 - Weddington Little League (Weddington, NC)

SOUTH CAROLINA

2012 – Anderson American Little League (Anderson, SC)
 2011 - Northwood Little League (Greenville, SC)
 2010 - Irmo Little League (Columbia, SC)
 2009 - Irmo Little League (Columbia, SC)
 2008 - Irmo Little League (Columbia, SC)
 2007 - Greenville Little League (Greenville, SC)
 2006 - Northwood Little League (Greenville, SC)
 2005 - Irmo Little League (Columbia, SC)

TENNESSEE

2012 – Karns Little League (Knoxville, TN)
 2011 – Goodlettsville Little League (Goodlettsville, TN)
 2010 – Clarksville National Little League (Clarksville, TN)
 2009 – Estill Springs Little League (Estill Springs, TN)
 2008 – Donelson Little League (Hermitage, TN)
 2007 - Tullahoma National Little League (Tullahoma, TN)
 2006 - Lexington Little League (Lexington, TN)
 2005 - Tullahoma National Little League (Tullahoma, TN)

VIRGINIA

2012 – Mechanicsville Little League (Mechanicsville, VA)
 2011 – Bridgewater Community LL (Bridgewater, VA)
 2010 – Atlee Little League (Mechanicsville, VA)
 2009 – Bridgewater Community LL (Bridgewater, VA)
 2008 - Southwestern Youth Association LL (Centreville, VA)
 2007 - Grottoes Little League (Grottoes, VA)
 2006 - Southwestern Youth Association LL (Centreville, VA)
 2005 – Dumfries-Triangle-Quantico LL (Dumfries, VA)

WEST VIRGINIA

2012 - Bridgeport Little League (Bridgeport, WV)
 2011 – Charleston Central Little League (Charleston, WV)
 2010 - Bridgeport Little League (Bridgeport, WV)
 2009 - Ripley Little League (Ripley, WV)
 2008 - Ripley Little League (Ripley, WV)
 2007 - Fringe Little League (Fairview, WV)
 2006 - Jefferson County LL (Shenandoah Junction, WV)
 2005 - Martinsburg Little League (Martinsburg, WV)


CENTRAL REGION (PAST TOSC PARTICIPANTS)

INDIANA

2008 – Ireland Little League (Ireland, IN)
 2007 – Terra Haute North Little League (Terra Haute, IN)
 2006 - Greenwood Little League (Greenwood, IN)
 2005 - Decatur Central Little League (Indianapolis, IN)

KENTUCKY

2008 – Valley Sports Little League (Louisville, KY)
 2007 - St. Matthews Little League (Louisville, KY)
 2006 - St. Matthews Little League (Louisville, KY)
 2005 - St. Matthews Little League (Louisville, KY)



"Our older boys were here two years ago, and as soon as we won state, a couple of them jumped up and said 'We're going back to Mitch Stadium.' It's a special place, even for local boys in Virginia."

- Preston Bach, SYA East Little League of Centreville, VA

"We've been all over the country with this.... We haven't played on a better field. This is like a major league park for them."

- Shawn Applewhite, Columbus American (Ga.) Little League

"Mitch Stadium is truly a special and unique facility and deserving of the pride I sense in the local volunteers and the citizens of Ceredo-Kenova. The refreshing atmosphere of small town America and youth baseball during this tournament lifts my spirit."

- Chester Robins, Greenville Little League (NC)