



**WVBA Convention
November 9 - 11, 2012
Harrison County Parks and Recreation Center
Clarksburg, West Virginia**

West Virginia Basketmakers Association

2012 convention November 9 - 11, 2012

Contents

Location and Directions, Convention Committees & Volunteers	2
Hotel Information.....	3
Registration Instructions.....	4
Raffle/Door Prize, Someone Else's Treasures, Silent Auction.....	5
Vendor Information, Keynote Speaker.....	5
Class Schedule.....	6
Meals.....	6
Classes by Teacher.....	7
Class Descriptions.....	8 - 14
Teacher Bios.....	15

WVBA Convention 2012
Harrison County Recreation Complex/4-H Center
43 Recreation Dr.
Clarksburg, WV 26301

Driving directions

Traveling from the west on Rt. 50, before reaching Clarksburg,
turn right onto WV 98 E (0.4 mi.)

Take the 1st left continuing on WV 98 E (2.4 mi.)

Turn right onto US-19 S/Milford St. (1.1 mi.)

Harrison County Recreation Center will be on the left.

Traveling from the south take 1-79 north to Rt. 50, go past Clarksburg,
turn left onto WV 98 E.

Take the 1st left continuing on WV 98 E (2.4 mi.)

Turn right onto US-19 S/Milford St. (1.1 mi.)

Harrison County Recreation Center will be on the left.

Convention Committee Volunteers

Convention Co-coordinators	Susie Hammock, Paula Huber and Sharon Sutton
Jury Committee	Western Weavers
Facilities/On Site Registration	Mid Ohio Valley
Class Registration/Name Tags	Mid Ohio Valley
Raffle/Door Prizes(give out & record)	Mound Weavers
Teacher Liaison	Gail Hutchinson
Welcome Gifts	Diana Easter
Convention Brochure	Sharon Sutton
Meals	Sharon Flanagan and Nancy Sealey

Motel and Hotel Information

Hilton Garden Inn
606 Emily Dr.
Clarksburg, WV 26301
1-304-326-8125
\$102 per night plus tax
Breakfast available

*Best Western Bridgeport Inn
100 Lodgeville Rd.
Bridgeport, WV 26330
1-304-842-5411
\$85 per night plus tax
Breakfast available

Days Inn & Suites
112 Tolley Dr.
Bridgeport, WV 26330
1-866-267-9053
\$72 per night plus tax
Breakfast available

Microtel Inn & Suites Bridgeport
201 Conference Center Way
Bridgeport, WV 26330
1-866-272-4856
\$64 per night plus tax
Breakfast available

Wingate by Wyndham Bridgeport
350 Conference Center Way
Bridgeport, WV 26330
1-866-276-6393
\$96 per night plus tax
Breakfast available

Hampton Inn Bridgeport Clarksburg
1515 Johnson Ave.
Bridgeport, WV 26330
1-866-279-5332
\$114 per night plus tax
Breakfast available

Super 8 Bridgeport Clarksburg
168 Barnett Run
Bridgeport, WV 26330
1-866-281-6817
\$56 per night plus tax
Breakfast available

Travelodge Bridgeport Clarksburg
1235 W. Main Street
Bridgeport, WV 26330
1-866-286-0843
\$56 per night plus tax
Breakfast available

Sleep Inn Bridgeport
115 Tolly Dr.
Bridgeport, WV 26330
1-866-295-5798
\$89 per night plus tax
Breakfast available

Holiday Inn Express & Suites Bridgeport
20 Sweetbrier Lane
Bridgeport, WV 26330
1-866-298-0996
\$114 per night plus tax
Breakfast available

These prices are subject to change.

*We have a block of rooms reserved at the Best Western. Tell them you are with WVBA to get the special \$85 rate. Cut off date to get special rate is Oct. 25.

Registration Instructions

Registration fees for the WVBA 2012 Convention are:

WVBA Member Full Conference Registration \$30

Non-Member Full Conference Registration \$45

Day Registration \$15/day (does not include evening meal on Saturday)

Please read the following instructions carefully.

1. Members of the WVBA will receive the 2012 Convention Booklet. Non-members will be charged a pre-paid fee of \$5 for the Convention Booklet and it will include a membership form, or they may download it from the WVBA website. Teachers for the 2012 Convention need to register if they are taking classes.
2. You must use the registration form provided in the convention class booklet or on the website to register. Please make a copy for your records. **Please print clearly or type.** Classes are assigned on a first come first serve basis. You should list more than one class for each time period. Only listing one class does not guarantee you will get that class.
3. Your registration fee must accompany the registration form along with a stamped, self addressed No. 10 envelope (4" x 9"). **Please make checks payable to WVBA.** Teachers must pay this fee if they are taking classes.
4. Registration forms and registration checks are to be returned to Sharon Sutton, 160 Scenic Hills, Parkersburg WV 26104 by September 14, 2012.
5. When you have been notified of your class assignments all checks for class fees must be made payable to the teacher(s) for each assigned class(es) and dated November 9, 2012. Class fees must be sent to Sharon Sutton by October 12, 2012 or classes will be forfeited.
6. No cancellations after October 20, 2012. **NO EXCEPTIONS.**
7. Questions? Call Sharon Sutton at 304-422-0068.

Special Notes: NO collapsible buckets!
Please note basket sizes when making your selections.

**In order to maximize the number of baskets being offered,
ALL teachers are teaching multiple baskets
during the same time period.**

Our new webpage will have the Convention Booklet on it. The web address is:

<http://pages.suddenlink.net/wvbasketmakersassoc/index.html>

Raffle & Door Prize Donations

Each year at Convention attendees anticipate getting a door prize, and hope that they will have the lucky ticket for a raffle item. The way we can do this is if you help us by bringing items to donate to the door prizes and the wonderful raffle items. These should be basket related.

Raffle Area

You might be lucky and take home some fantastic items that were generously donated to our Convention. Tickets will be on sale throughout Friday and Saturday until just before the business meeting. All tickets must have names on them. Tickets without names will not be honored. An easy way to put your name on the raffle ticket is to bring self-adhesive address labels with you to stick on the back of the raffle ticket. Raffle donations are greatly appreciated.

Someone Else's Treasures

You've heard the quote, "One man's trash is another man's treasure". Well, this year we will have a table set up for you to bring those basket items you have had for years and still haven't used on your baskets. If you find something on the table you could use. It's yours! Just deposit a monetary donation for it in the box on the table. What ever you think it is worth to you. It's a win-win situation! Someone was able to give away something they didn't want, and someone else was able to find that item that they just had to have. The money collected will be used to help sponsor a scholarship for next year's convention.

Silent Auction

There will be a silent auction this year. Each guild is asked to bring 4-5 baskets for this event. If you don't belong to a guild and would like to bring some baskets for this, you are encouraged to do so.

Vendor for Convention

The vendor for this year's Convention will be **Willowes** from Indiana. Be sure to check out their wares.

All teachers will also be participating in **Teacher Marketplace** throughout the weekend.

Keynote Speaker

The Keynote Speaker for this year's Convention will be **Venie Hinson**.

Class Schedule

Friday

1:00 p.m. - 5:00 p.m.	Classes
5:00 p.m. - 6:00 p.m.	Dinner
6:00 p.m. - 10:00 p.m.	Classes

Saturday

8:00 a.m. - 12 noon	Classes
12 noon - 1:00 p.m.	Lunch
1:00 p.m. - 5:00 p.m.	Classes
5:00 p.m. - 6:00 p.m.	Dinner
6:00 p.m. - ?	Guest Speaker - Venie Hinson WVBA Business Meeting Election of Officers Raffle and Door Prizes

Sunday

8:00 a.m. - 3:00	Classes
12:00 noon - 1:00 p.m.	Lunch

Friday, Saturday and Sunday The "Someone Else's Treasures" table will be available all three days.

Convention Menu

Friday Evening Supper: Cold cuts, cheese, assortment of breads to make your own sandwich
Ramen Noodle Cole Slaw
Dessert

Saturday Lunch: Soup
Garden Salad
Dessert

Saturday Dinner: Catered by Minard's of Clarksburg

Sunday Lunch: Cooks Choice

Drinks provided throughout the Weekend: Tea, Coffee, Soft Drinks, Water

Attendees are asked to bring a snack item to share.

Since we will be too far from restaurants, we will be eating our lunches, Friday supper and Saturday dinner at the Harrison County Parks and Recreation building where we are weaving.

You will not be charged extra for these meals, as they are included as part of the Registration Fee. What a bargain!

Breakfasts are on your own.

Classes By Teacher

Susie Billingsley

			Begins at	
Fri-01	Coiling with Reed	8 hrs.	1:00PM	All Levels
Fri-03	Coiling Reed on a Gourd	6 hrs.	1:00PM	All Levels
Sat-01	Susie's Egg Basket	8 hrs.	8:00AM	All Levels
Sun-01	Cane on Gourd w/Embellishment	6 hrs.	8:00AM	All Levels
Sun-02	Funky Coiling	4 hrs.	8:00AM	All Levels

Karen Griffith

Fri-02	Canisters in Black	6 hrs.	2:00PM	All Levels
Fri-04	Beaded Vase	6 hrs.	1:00PM	All Levels
Sat-02	Jocelyn's Carry-All	8 hrs.	9:00AM	Intermediate
Sat-03	Double Chocolate Swirl	8 hrs.	8:00AM	Intermediate
Sun-03	Shades of Black and Brown	4 hrs.	8:00AM	Beg./Inter.
Sat-04	Lined Basket	4 hrs.	8:00AM	Beg./Inter.

Venie Hinson

Fri-05	Marbling Workshop	2 hrs.	1:00PM	All Levels
Fri-06	Black Walnut Special	6 hrs.	3:00PM	Intermediate
Sat-04	Beth's Challenge	8 hrs.	8:00AM	Advanced
Sat-05	Hopi-Style Bowl or Tray	8 hrs.	8:00AM	All Levels
Sat-06	Iroquois Treasures	8 hrs.	8:00AM	Advanced
Sun-05	Springtime Serenade	4 hrs.	8:00AM	Novice/ Inter.
Sun-06	Summertime	4 hrs.	8:00AM	Inter./Advan.
Sun-07	Fall Frolic	4 hrs.	8:00AM	Inter./Advan.
Sun-08	Winter's Frost	4 hrs.	8:00AM	Begin./Inter.

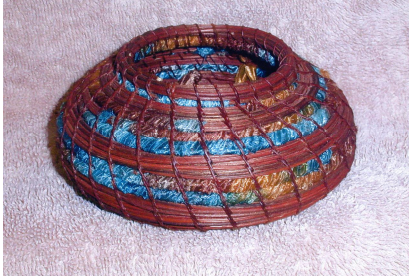
Joni-Dee Ross

Fri-07	4" or 5" Butterfly	6 hrs.	1:00PM	All Levels
Fri-08	Utensil Nantucket	8 hrs.	1:00PM	All Levels
Sat-08	Knitting Needle Basket	8 hrs.	8:00AM	All Levels
Sat-09	Nantucket Budvase	8 hrs.	8:00AM	All Levels
Sun-09	Mini Sand Pail	4 hrs.	8:00AM	All Levels
Sun-10	Mini Flower Pot	4 hrs.	8:00AM	All Levels
Sun-11	1" Traditional Nantucket	4 hrs.	8:00AM	All Levels
Sun-12	Nantucket Frog	4 hrs.	8:00AM	All Levels

Please note that not all classes start at the same time. Some teachers who are teaching more than one class will start one basket at one time and the next one an hour or two later.

Friday Classes 1:00 p.m.—10:00 p.m.

Dinner 5:00 p.m.—6:00 p.m.



5+W x 5+L x 4+H

**Coiling with Reed
Susie Billingsly**

This coiled basket looks like pine needles but is actually round reed. Learn to do something different with materials you already have. Begins on a slice of walnut. Add ribbon for contrast.

Fri-01 \$50 All Levels 8 hrs.



53.5" Circumference
16"D x 7", 8", 9", 10"H

**Canisters in Black
Karen Griffith**

Oak slotted bases are attached to permanent black ceramic molds to complete this 4 piece canister set. Cane is used to weave a triple spiral over black flat oval spokes creating a striking contrast against the black spokes. At least one piece will be completed during class time.

Fri-02 \$110 All Levels 6 hrs.

Class starts at 2:00

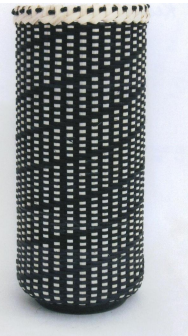


9"W x 9"L x 9"T

**Coiling Reed on a Gourd
Susie Billingsley**

Learn easy coiling. Begin with a dyed, sealed, and drilled gourd and coil with round reed and waxed linen. Add ribbon yarn randomly for contrast. No two alike. Embellish with beads. Fun and easy.

Fri-03 \$60 All Levels 6 hrs.



11.5" Circumference
3.5"D x 8.5"H

**Beaded Vase
Karen Griffith**

Begins with a black slotted base attached to a permanent glass mold to create this striking black over white vase. Flat oval spokes, dyed hamburg cane, a folded rim and a bead embellishment are used to complete the project.

Fri-04 \$36 All Levels 6 hrs.

Class starts at 1:00

Friday Classes 1:00 p.m.—10:00 p.m.

Dinner 5:00 p.m.—6:00 p.m.



3 poplar strips, each 2+x 48+
Or one silk scarf 8+x 54+

**Marbling Workshop
 Venie Hinson**

Marbling is the art of floating colors on a solution, then combing through the stones to create colorful patterns. Watch a lecture/demo on how to marble. Then it's YOUR turn to have fun! Create your own marbling patterns. Extra strips available @ \$6 each, extra scarves @ \$15 each.

**Fri-05 \$29 All Levels 2 hrs.
 Class begins at 1:00**



12" D x 6"H

**Black Walnut Special
 Venie Hinson**

Begin with a solid black walnut base and combination of natural and black walnut overlay spokes. Then chase weave on the sides. "Curls" are actually woven in as the sides are woven horizontally—rather than after rims are completed.

**Fri-06 \$65 Intermediate 6 hrs.
 Class begins at 3:00**



4" Butterfly 4 1/4" D x 4 1/2" T
 5" Butterfly 5 1/5"D x 5 1/2"T

**4" or 5" Butterfly
 Joni-Dee Ross**

The size of the basket is up to the student. The lid sits down in the rim and the stem of the knob is part of the lid. Learn techniques needed to use hardwood weavers as staves, a simple pattern and many tips to make weaving nantuckets easier. Cherry and walnut kits will be available. Exotic kits will be available for an additional charge. The mold is a teacher mold.

Fri-07 \$80 All Levels 6 hrs.



6"D x 8"T

**Utensil Nantucket
 Joni-Dee Ross**

The Utensil Nantucket holds the utensils used when creating a meal and it will add grace to any kitchen. This is an easy

basket to make. Patterns will be discussed and demonstrated in class. Many tips will be demonstrated to make weaving Nantucket Baskets easier. Kits are available in cherry and walnut. The mold is a teacher mold.

Fri-08 \$80 All Levels 8 hrs.

Saturday Classes 8:00 a.m.—5:00 p.m.

Lunch 12:00 noon—1:00 p.m.

Dinner 5:00 p.m.—6:00 p.m.



12+W x 14+L x 14+H

Susie's Egg Basket
Susie Billingsley

12+hoops will be used to make an egg basket of multi colored reed and seagrass. If you are intimidated by ribbed baskets, this class is for you. Learn an easy God's eye, backweaving, how to measure spokes and a choice of 3 handles.

Sat-01 \$80 All Levels 8 hrs.



8"W x 16"L x 12"H

Jocelyn's Carry-All
Karen Griffith

Jocelyn's Carry-All begins on a slotted oak base using black reed over natural reed in basic basket construction. Double swing handles with black wood beads are attached through the rim. A reed embellishment surrounds the completed basket.

Sat-02 \$55 Intermediate 8 hrs.



45"Circumference x 12" D x 13" H

Double Chocolate Swirl
Karen Griffith

Double Chocolate Swirl begins on an 8" double slotted base with natural inside wall forming a mold for the chocolate brown outside wall. Weaving includes overlays, 4 rod wale, double wall construction and round reed woven embellishment. Handle is attached through the rim.

Sat-03 \$75 Intermediate 8 hrs.



11"W x 8"H

Beth's Challenge
Venie Hinson

This basket is LOADED with techniques and learning experiences. Three marbled strips are cut, shaped, and used as randing as well as overlays, using colors that complement the hand-painted wooden beads at the top. Go right from the balanced 2/2 top weaves into the folded down spokes/beads-no rim bands required.

Sat-04 \$75 Advanced 8 hrs.

Saturday Classes 8:00 a.m.—5:00 p.m.

Lunch 12:00 noon—1:00 p.m.

Dinner 5:00 p.m.—6:00 p.m.



Bowl 11" W x 6"H; Tray 15-16" D

Hopi-Style Bowl or Tray
Venie Hinson

Lots of colors to choose from. Both bowl and tray are woven the same—the difference is in the shaping. The wrapped bases will come pre-started. Complete the rim in an easy waxed linen or reed. Some leathers will also be available to embellish your basket.

Sat-05 \$75 All Levels 8 hrs.

Some experience helpful.



11"D x 12"H

Iroquois Treasures
Venie Hinson

Full of great techniques, from a bundled base, to a 2/2 waling in regular/reverse weave creating arrows around the basket, to three different twill patterns, to a lovely, unique pull & lash trim. Made of natural and smoked reed, with a marbled strip to match.

Sat-06 \$69 Advanced 8 hrs.

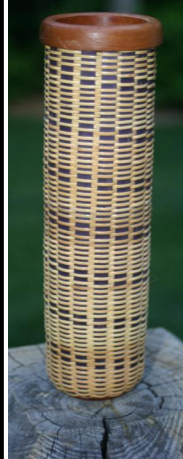


3 1/4"D x 10 4/3" T

Knitting Needle Basket
Joni-Dee Ross

The Knitting Needle Basket was designed for a special person who requested a Nantucket to hold her knitting needles. The base is flared to keep it steady. The rim is a slip on rim. This is a great basket to weave a pattern in. Learn to weave with a flared base. The staves and weavers are cane.

Sat-07 \$80 All Levels 8 hrs.



1 3/4"D x 8 1/4"T

The Nantucket Budvase
Joni-Dee Ross

The Budvase is a delightful basket to make. The staves are dyed black ash. Patterns will be discussed and several tips will be given to make Nantucket weaving easier. In addition-vases of various sizes (ranging from 3" in diameter and 7" to 11" in height will be available at class. (Student will pay the

Difference for the larger size.) Lots of dyed cane and black ash along with natural will be available for the staves along with dyed and space dyed weavers.

Sat-08 \$50 All Levels 8 hrs.

Sunday Classes 8:00—3:00
Lunch 12:00 noon—1:00 p.m.



10"W x 14"H

Cane on Gourd with Embellishment
Susie Billingsley

This project begins with adding spokes to a dyed, sealed and drilled gourd. The body is woven with dyed cane. A rim is made with the spokes in a three part braided border. Then we get creative with a palm inflorescence embellishment that also uses beads and wire.

Sun-01 \$60 All Levels 6 hrs.



8"W x 8"L x 8"H

Funky Coiling
Susie Billingsley

This project begins with a pre-dyed, sealed and drilled gourd. Learn to coil with wild and funky palm inflorescence. No two are alike. Assorted colors of gourds. Lots of fun.

Sun-02 \$50 All Levels 4 hrs.



11.5"W x 16"L x 12.5"H

Shades of Black and Brown
Karen Griffith

Shades of Black and Brown begins with a woven base. Flat reed, smoked overlays, black accent strips and sewn on leather handles are used in construction. A large reed flower in black and smoked reed with a leather and bead center add to the basket.

Sun-03 \$50 Beginner/Intermediate 4 hrs.



6"W x 12"L x 10"H

Lined Basket
Karen Griffith

This tote begins with a woven flat reed bottom. The filler spokes become a part of the short ends as you weave up the sides. Wide shaker tape accents the sides. Velcro is laced into the rim to house the removable liner. Shoes protect the basket bottom.

Sun-04 \$50 Beginner/Intermediate 4 hrs.

Sunday Classes 8:00—3:00
Lunch 12:00 noon—1:00 p.m.



10"W x 12"L x 10"H

Springtime Serenade
Venie Hinson

Sets of inch-wide marbled spokes are separated by coordinating reed spokes, all dyed in springtime colors. The pre-shaped spokes, inserted into a slotted oval hardwood base ensure accurate shaping of the basket's sides. Weave sides in an undulating broken twill pattern and complete the rim with two oak side handles and waxed linen lashing. Spokes are pre-shaped for class.

Sun-05 \$52 Novice/Intermediate 4 hrs.



10"W x 12"L x 7.5"H

Summertime
Venie Hinson

The sides of Summertime feature undulating marbled weavers bordered by 4-rod waling done in a 2/2 pattern. The sides use twining and plain weave. The rim is unique: no cut and tuck, but rather features a modified ti-twining using the overlay spokes. Add hand-made "flowers" and "curl" leaves as embellishments to complete the look. Pre-started base.

Sun-06 \$59 Intermediate/Advanced 4 hrs.



9"W x 12"L x 8"H

Fall Frolic
Venie Hinson

Worked in fall colored reed, marbled strips and plenty of seagrass. Fall Frolic features a slotted hardwood base, 2/2 waling and plain and continuous weaves. Create side handles from braided seagrass and add a seagrass decoration on the front. The seagrass woven as weavers is worked continuously, passed upwards from row to row. **Not for beginners.**

Sun-07 \$45 Intermediate/Advanced 4 hrs.



9"W x 12"L x 6.5"H

Winter's Frost
Venie Hinson

Winter's Frost features a solid slotted oval hardwood base and two marbled strips. Spokes are a combination of dyed reed and marbled strips—cut into undulating form (1 marbled strip). A second marbled strip is used to form the marbled rim bands, which are topped with a unique beaded finish, and lashed on with waxed linen in a modified blanket stitch.

Sun-8 \$52 Beginner/Intermediate 4 hrs.

Sunday Classes 8:00—3:00
Lunch 12:00 noon—1:00 p.m.



1 3/4"D x 2"H w/out handle, 3"H with handle

Mini Sand Pail
Joni-Dee Ross

The Mini Sand Pail will be available in cherry or walnut wood. Lots of tips will be demonstrated to make mini Nantuckets easier to weave. A new way to attach handles will be taught so there is no peening involved. The mold is a teacher mold, but molds and extra kits will be available. **Helps to have some experience with Nantuckets.**

Sun-09 \$35 All Levels 4 hrs.

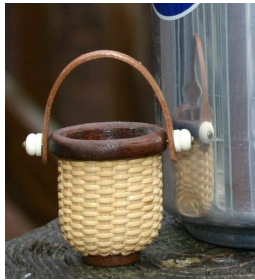


1 3/4" D x 1 3/4"T w/out handle, 3"T with handle

Mini Flower Pot
Joni-Dee Ross

Available in cherry or walnut wood. Lots of tips will be demonstrated to make mini Nantuckets easier to weave. A new way to attach handles will be taught so there is no peening involved. The staves are inserted in a very different way in this basket. The mold is a teacher mold, but molds and extra kits will be available. **Helps to have some experience with Nantuckets.**

Sun-10 \$35 All Levels 4 hrs.



1"D x 1"T w/out handle, 2"T with handle

1" Traditional Nantucket
Joni-Dee Ross

Available in cherry or walnut wood. Lots of tips will be demonstrated to make mini Nantuckets easier to weave. A new way to attach handles will be taught so there is no peening involved. This is a wonderful basket for a necklace. Mold is a teacher mold, but molds and extra kits will be available. **Helps to have some experience with Nantuckets.**

Sun-11 \$35 All Levels 4 hrs.



3"D x 2 1/2"T

The Nantucket Frog
Joni-Dee Ross

The Nantucket Frogs are quick and easy to make. Lots of tips will be given to make weaving Nantuckets easier. A variety of staves (both natural and dyed) will be available along with a variety of natural and space dyed weavers.

Sun-12 \$50 All Levels 4 hrs.

Teacher Bios

Susie Billingsley

Susie began her love of basketry as a child. She made three small baskets of plastic materials at age 9 and continued to collect them through her teen years. Her first actual reed basket was made in 1983 and a hobby became a business immediately. She has done many art shows in Indiana and in neighboring states. She has taught classes in Indiana, Missouri, Tennessee, Kentucky, Ohio, Michigan, North Carolina, and Georgia. She lives in the country with her husband, granddaughter, two cats and two dogs. She also loves to watch wildlife, garden, and feeds 300 hummingbirds.

Karen Griffith

Karen was first exposed to weaving at the Sauder Village in Archbold, Ohio in 1990. She has been weaving, teaching and designing ever since. You might meet her at many of the state weaves or special guild events. She works out of her studio in Pleasant Lake, Indiana where she teaches weekly classes and is the owner of Farmer's Wives Baskets. After teaching in the public schools of Indiana for 33 years, Karen is now able to spend time reading, knitting, spending time with her precious grandchildren and of course weaving.

Venie Hinson

Venie has been designing baskets and teaching since 1987. She holds a BFA from Kent State University with special emphasis on fiber arts. Originally a loom weaver, she began exploring and analyzing basket design and construction techniques in 1989 and teaching full time nationally for the past 15 years. Venie's work has been featured in Basket Bits (a national basket magazine), on Fox TV (Cleveland) in 2004 as well as Cleveland Magazine and numerous northeast Ohio Newspaper articles.

Joni-Dee Ross

When Joni-Dee wove her first basket in 1989, she discovered the perfect expression of her exuberant optimism and joy in life. Then living in Rocky Mount, she founded Handmade North Carolina Baskets in 1991. Now living in Summerville, NC she also co-owns The Woodland Nantucket Retreat Company with Denise Bendelewski of Magnolia Baskets. She has written and published over 55 basket patterns. In addition to teaching weekly basketry classes in her Summerfield studio, Joni-Dee regularly conducts classes at conventions, private guilds, and art centers throughout the United States. She and partner Denise will soon be publishing a book of basket patterns and weaving techniques. Two things accompany Joni wherever she goes: healthy foods and weaving materials. Joni-Dee's husband of thirty-seven years, David is an experienced woodworker as well as PhD in Biology and Joni often commissions from him special wooden components for her baskets.